

Siemens PLM Software 技術技巧及新聞

歡迎流覽《Siemens PLM Software 技術技巧及新聞》，希望它能成為 Siemens PLM Software 技術支援團隊將 Siemens PLM Software 最新產品更新、技術技巧及新聞傳遞給用戶的一種途徑

Date: 2018/07/06

SPLM license News

1. Siemens PLM licensing server V9.0.1

SPLM license server V9.0.1 已經發佈並可以從 GTAC ftp 檔案伺服器上下載

<https://download.industrysoftware.automation.siemens.com/>

The screenshot shows the Siemens PLM Software website interface. At the top, there are navigation links for 'Home', 'Training & Support', 'GTAC', and 'Siemens PLM Download Server'. Below this, there are four main action buttons: 'Download', 'Upload', 'Help', and 'Useful Link'. A search bar is present with the placeholder text 'Search for File Name for Full Product or Product Updates'. On the left side, there is a 'Product Filter' section with a list of categories, including 'Siemens PLM Licensing' which is currently selected. The main content area displays a tree view for 'Siemens PLM Licensing' with sub-items like 'Product updates', 'CID', 'Documentation', 'Drivers', and 'Installs'. Under 'Installs', four files are listed with their sizes and dates (Jun 21, 2018): 1. README.txt (2,306 bytes), 2. VERSION.txt (9 bytes), 3. SPLMLicenseServer_v9.0.1_linux_setup.bin (10,081,600 bytes), and 4. SPLMLicenseServer_v9.0.1_win_setup.exe (22,166,536 bytes). There are also links for 'View Contents' and 'View Details' for each file.

Supported Platforms

On Linux x64 64bit:

- RedHat Enterprise 6, 7
- SUSE Linux Enterprise 11 and 12

On MacOS x64 64bit:

- Mac OS X 10.10, 10.11, 10.12, and 10.13

On Solaris Sparc 64 bit:

- Solaris 10 and 11

On Windows 32 and 64 bit:

- Windows 8.1
- Windows 7 SP1
- Windows Server 2012 and 2012 R2
- Windows Server 2016
- Windows 10

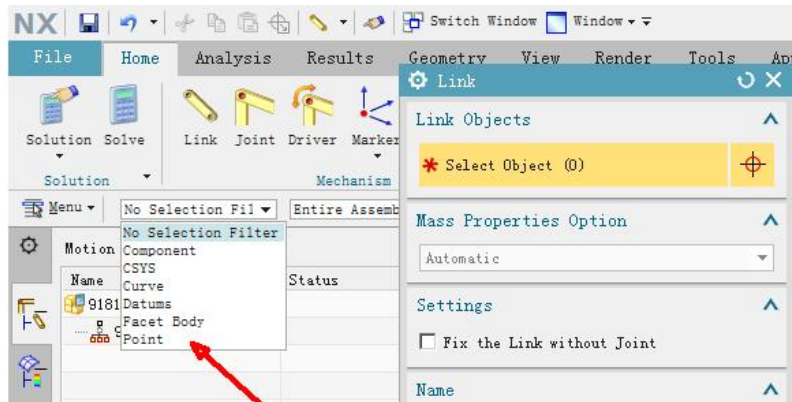
It is a best practice to run license servers on a server based OS.

NX Tips

2. 在 Motion simulation 中無法選擇實體創建 Link

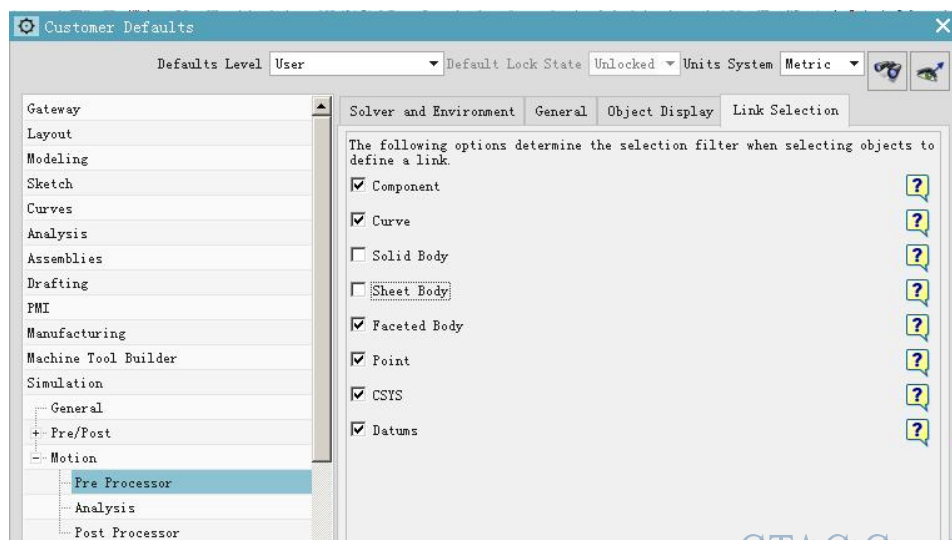
Problem

在 Motion simulation 中創建 Link 連杆時，為什麼 NX 的選擇類型篩檢程式裡沒有實體選項？無法選擇實體創建 Link。



Solution

在 customer defaults → simulation → motion → pre processor → link selection 中，要把實體或者其它需要創建連杆的類型選擇上，重啟 NX 就可以選擇對應類型創建 Link 了。



Teamcenter Tips

3. 自動指派 BOMView, BOMView Revision 到專案

問題：

當指派一個零元件至專案時，如何將 BOMView 和 BOMView Revision 也自動指派給專案？

方法：

定義傳播規則，如下：

自動指派 BOMView

Add Propagation Rule
Adds a new Propagation Rule

Project: g2pl

Direction: Forward

Source Business Object: * Item

Operation: All

Property Type: Relation Reference

Reference: * altd_list

Destination Business Object: * Match All

Propagation Group: * Security Group I

Action Condition: * isTrue

Traversal Condition: * isTrue

Propagation Style: Merge

Secured
 Background

自動指派 BOMView Revision

Add Propagation Rule
Adds a new Propagation Rule

Project: g2pl

Direction: Forward

Source Business Object: * ItemRevision

Operation: All

Property Type: Relation Reference

Reference: * structure_revisions

Destination Business Object: * Match All

Propagation Group: * Security Group I

Action Condition: * isTrue

Traversal Condition: * isTrue

Propagation Style: Merge

Secured
 Background

Greater China

ME&S Service Team

PRC Helpdesk (Mandarin): 800-810-1970/021-22086635

Taiwan Helpdesk (Mandarin): 00801-86-1970

HK Helpdesk (Cantonese): 852-2230-3322

Global Technical Access Center: <http://www.siemens.com/gtac>

Siemens PLM Software Web Site: <http://www.plm.automation.siemens.com>

Siemens PLM Software (China) Web Site: http://www.plm.automation.siemens.com/zh_cn/

~~~~~  
此e-mail newsletter 僅提供給享有產品支援與維護的Siemens PLM 軟體使用者。當您發現問題或希望棄訂，請發送郵件至 [helpdesk\\_cn.plm@siemens.com](mailto:helpdesk_cn.plm@siemens.com) 聯繫，如棄訂，請在標題列中注明“棄訂”  
~~~~~